

111-50-10670**Species Addition / Route Correction****Water body name:** Ninemile Creek**Survey date:** 09/01/2020**Watershed:** Mendenhall River-Frontal Gastineau Channel**Species & Lifestage:** Ps**MTR:** C041S066E**Quad:** Juneau B-2**Observers:** Mark Hieronymus

Findings: I surveyed Ninemile Creek (111-50-10670) with a fishing rod and a GPS. I observed adult Pink and Chum Salmon and captured adult Pink Salmon (Table 1, Figures 1-4). I have also included a Route Correction for 111-50-10670 (Figure 4), as its terminus in Gastineau Channel is above MLLW.

Table 1.– 111-50-10670 survey data.

Waypoint	Latitude	Longitude	Notes	Sample Effort	Sample Results
1	58.33767	-134.57610	Trail from road intersects creek here; several Pinks in stream below this point. One dead Pink in stream, one live female Chum and one live male Pink at this location.	Visual	1 CH, 1 P, 1 P carcass
2	58.33739	-134.57632	7 P in approx. 25' here. 2 females digging redds, each surrounded by males jockeying for position.	Visual	7 P
3	58.33692	-134.57640	Captured 2 P here. Bottom of log "ladder" in creek. 6 other live P between here and waypoint 2.	Hook and line	2 P



Figure 1.- 2 male Pink salmon behind a female, waypoint 2.



Figure 2.- Female Pink salmon at waypoint 3.



Figure 3.- Male Pink salmon at waypoint 3.

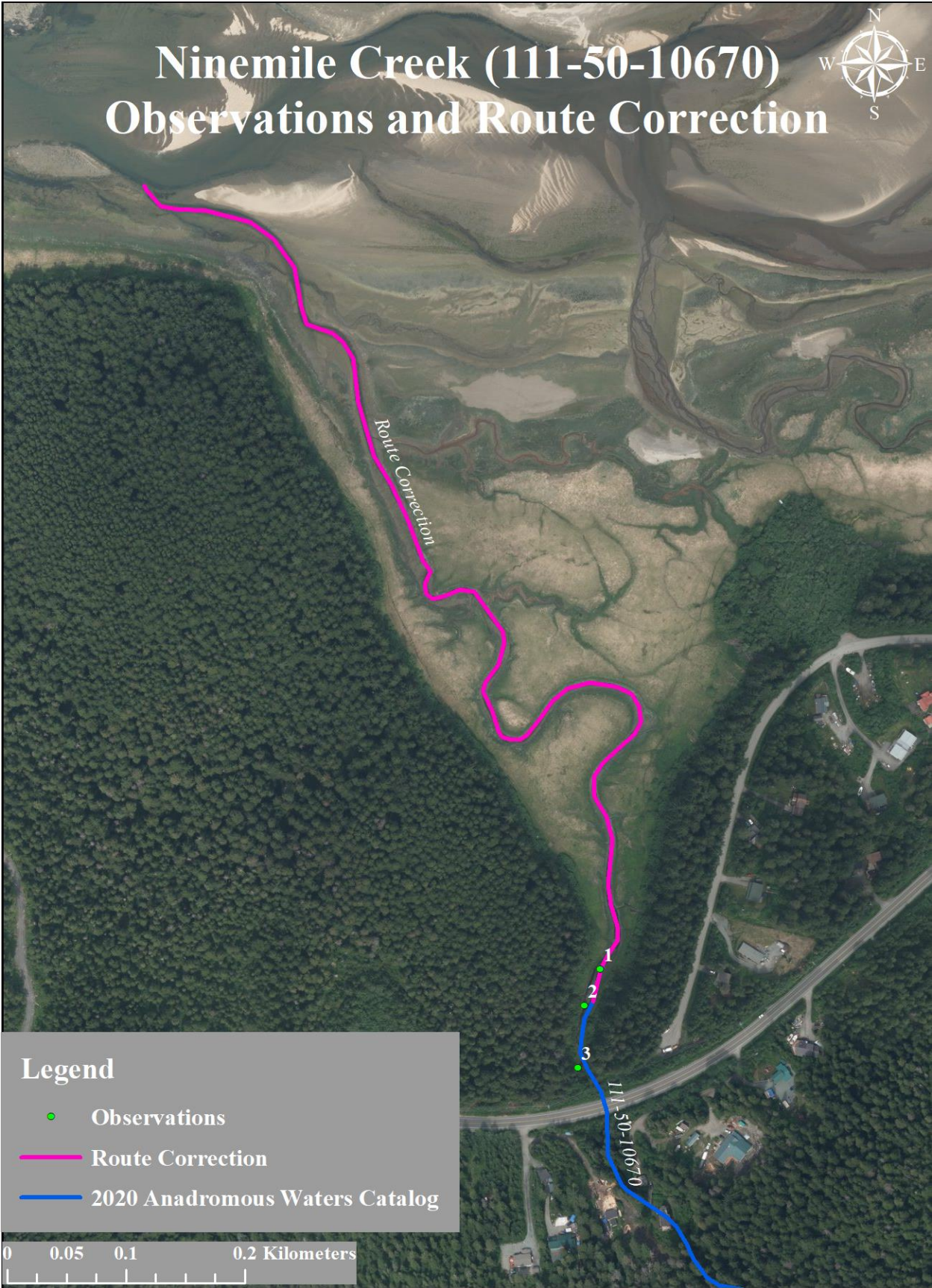


Figure 4.- Ninemile creek (111-50-10670) species observations and route correction.